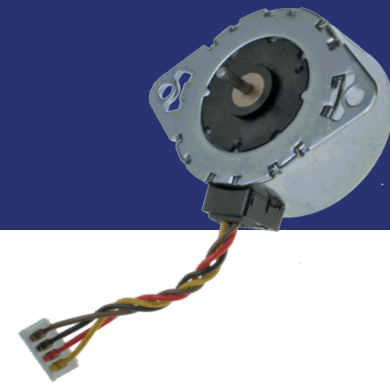


35S Series

Key Features

- High torque
- Low noise
- Small size



**ANGEBOT
ANFORDERN**
Bitte hier klicken

General Specifications

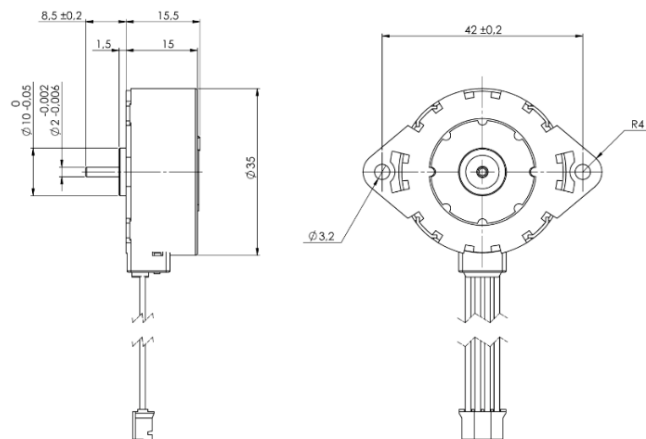
Series	Step angle (°)	Voltage (V)	Current (A)	Resistance (Ω)	Inductance (mH)	Holding torque (mNm)	Detent torque (mNm)
35S24B0700	15°	24	0,5	7,5	7,3	38	5,0
35S24B2500	15°	24	0,5	25	22,3	60	5,0
35S48B0700	7,5°	24	0,5	7,5	10	50	7,0
35S48B2500	7,5°	24	0,5	25	27,2	80	8,0
35S96B0700	3,75°	24	0,5	7,5	11,9	35	4,5
35S96B2500	3,75°	24	0,5	25	37	45	4,5

Motore mit 15° / 3.75° NUR für Projekte

Optional Features

Mechanical Dimensions

- Gearbox
- Custom winding, wire harness
- Custom pinion, leadscrew
- Custom shaft
- Other specifications



Stegia AB
Regattagatan 22B
723 48 Västerås
Sweden
+46 (0) 21 811 822
info@stegia.com

Stegia Shanghai Co., Ltd.
1F, Block 8, No. 365 Chuanhong Road
Pudong New Area, Shanghai 201202
P.R. China
+86 21 58 59 16 82

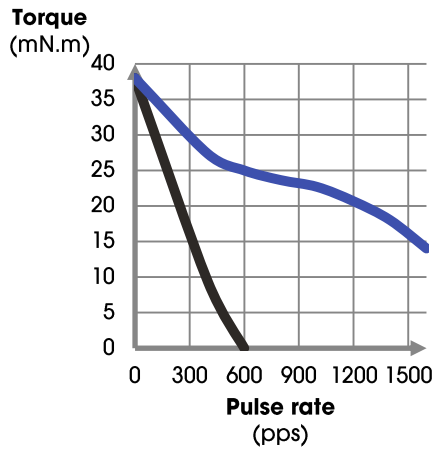
Stegia Taiwan Co., Ltd
B03-1A2 No. 1, Lising 1st Rd., East Dist.
Hsinchu City 30078
Taiwan
+88 59 78 55 07 08

Dynamic Torque Curves

35S24B0700

Conditions: Bi-polar Constant Current Driver
 Driver: AMIS 30522
 Mode: Full Step

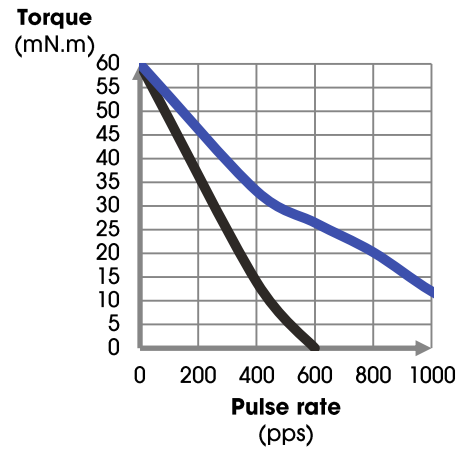
— Pull in torque — Pull out torque



35S24B2500

Conditions: Bi-polar Constant Current Driver
 Driver: AMIS 30522
 Mode: Full Step

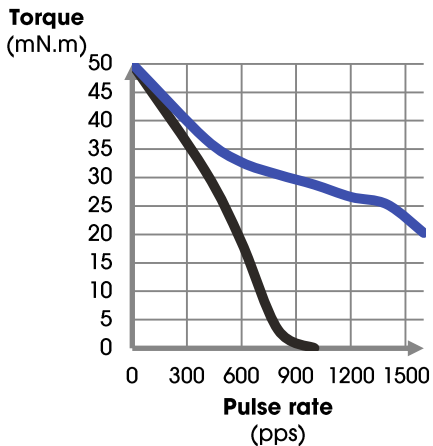
— Pull in torque — Pull out torque



35S48B0700

Conditions: Bi-polar Constant Current Driver
 Driver: AMIS 30522
 Mode: Full Step

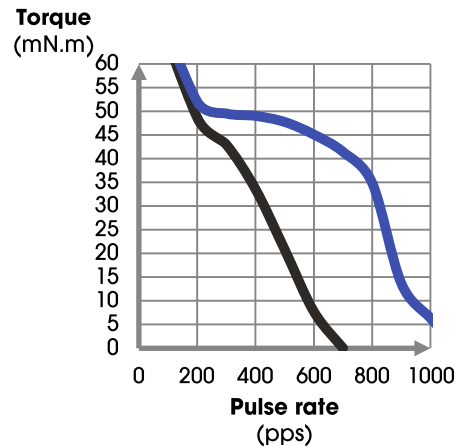
— Pull in torque — Pull out torque



35S48B2500

Conditions: Bi-polar Constant Current Driver
 Driver: AMIS 30522
 Mode: Full Step

— Pull in torque — Pull out torque



Dynamic Torque Curves

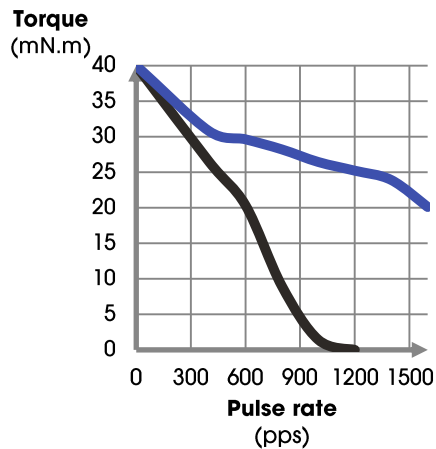
35S96B0700

Conditions: Bi-polar Constant Current Driver
 Driver: AMIS 30522
 Mode: Full Step

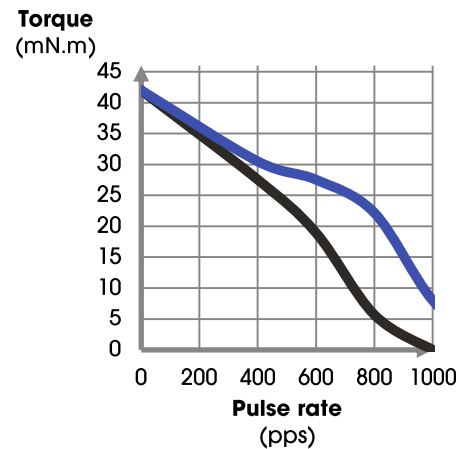
35S96B2500

Conditions: Bi-polar Constant Current Driver
 Driver: AMIS 30522
 Mode: Full Step

— Pull in torque — Pull out torque



— Pull in torque — Pull out torque



**ANGEBOT
ANFORDERN**

Bitte hier klicken



Antriebstechnik GmbH

Starkenbourgstr. 6 * 64546 Mörfelden

Tel.:06105 24044 * Fax:06105 25593

info@color-technik.net

www.color-technik.net

Stegia AB

Regattagatan 22B
 723 48 Västerås
 Sweden
 +46 (0) 21 811 822
 info@stegia.com

Stegia Shanghai Co., Ltd.

1F, Block 8, No. 365 Chuanhong Road
 Pudong New Area, Shanghai 201202
 P.R. China
 +86 21 58 59 16 82

Stegia Taiwan Co., Ltd

B03-1A2 No. 1, Lising 1st Rd., East Dist.
 Hsinchu City 30078
 Taiwan
 +88 59 78 55 07 08